

CHECKPOINT™

THE ORIGINAL AND THE BEST

Sizing Chart

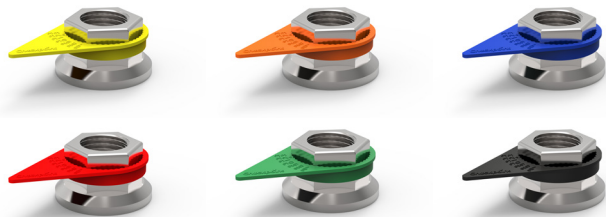
Common Commercial Truck Lug Nut Sizes

Lug Nut Size		Point to Point	Checkpoint	Dustite
MM	IN			
21	13/16		X	LR*
22	7/8		X	LR*
33	1 5/16	X	X	X, LR
38	1 1/2		X	X

LR: Long Reach, ideal for applications that use wheel trims or recessed lug nuts

* Available in a shorter (7/8") barrel size

Common Colors



Lug Nut Size		Checkpoint	Dustite
MM	IN		
17	11/16	X	LR
18		X	
19	3/4	X	LR
20		X	LR
23		X	
24	15/16	X	X, LR
25	1	X	
26		X	
27	1 1/16	X	X, LR
28		X	X
29	1 1/8	X	
30	1 3/16	X	X, LR*
31		X	
32	1 1/4	X	X, LR
34		X	
35	1 3/8	X	
36		X	
40	1 9/16	X	
41	1 5/8	X	X
44	1 3/4	X	
46	1 13/16	X	



DELIVERING EXTRA MILES IN EXTRAORDINARY WAYS™

Note: Inch sizes show closest conversion from mm
Rev. 4.15

CHECKPOINT™

THE ORIGINAL AND THE BEST

Identifies torque issues:

If a lug nut moves, the nut & stud should be inspected - *TIA & TMC recommended practices*

Designed to melt: Identifying wheel end issues causing excess heat, such as wheel bearing failure.

Only Point-to-Point indicator

2x the teeth = more accuracy

The easiest to install: Slides On, Stays On!

CheckTorque

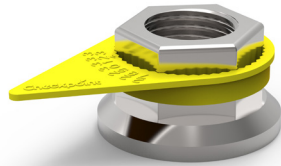
Serves as a reminder for lug nuts to be checked for proper torque 50-100 miles after the initial wheel mounting.

High Temp (329 F melt point)

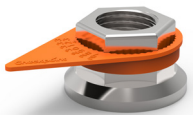
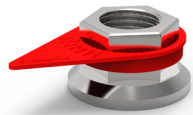
Ideal for application with high heat at the wheel end, as seen with waste haul, municipal transit, or severe stop/start applications.

Dustite

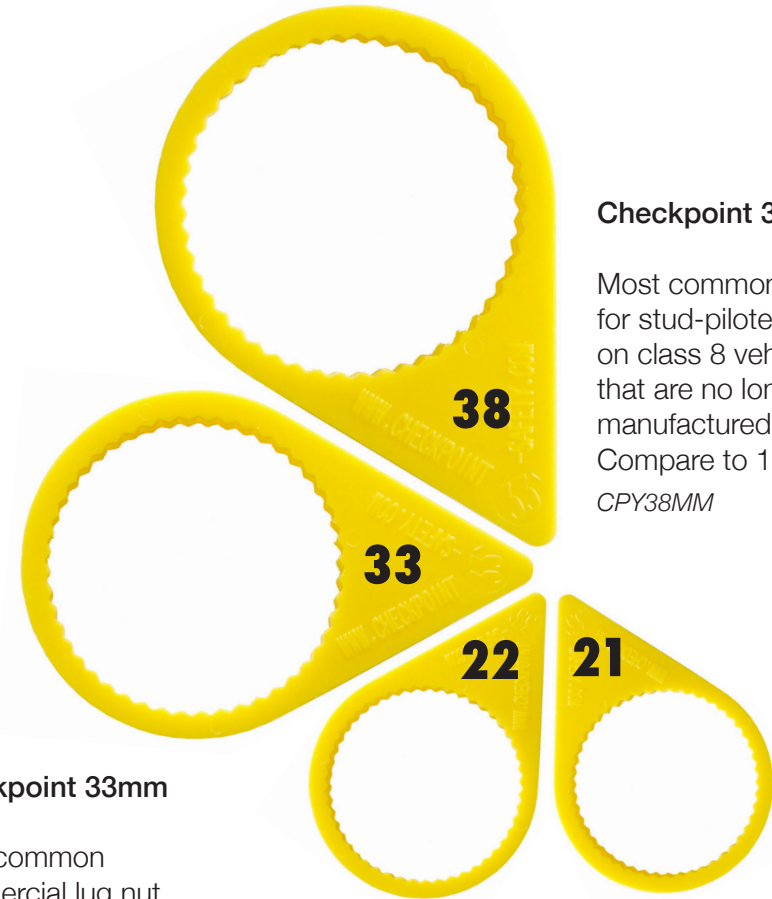
Cap covers lug nut to prevent contaminants from degrading lug and stud, often seen in mining or industrial applications.



257 F melt point



Common Commercial Truck Lug Nut Sizes



Checkpoint 38mm

Most commonly used for stud-piloted wheels on class 8 vehicles that are no longer manufactured. Compare to 1 1/2" *CPY38MM*

Checkpoint 33mm

Most common commercial lug nut size, the 33mm is used for most medium and heavy duty trucks. Compare to 1 5/16" *CPCYPP33MM*

Checkpoint 22mm

Most common light truck lug nut size. Compare to 7/8" *CPY22MM*

Checkpoint 21mm

A secondary light truck lug nut size. Compare to 13/16" *CPY21MM*